



AkiNik

ISSN 2320-7078

JEZS 2014; 2 (1): 54-55

© 2014 JEZS

Received 21-12-2013

Accepted: 04-01-2014

Jiří HÁVA

Department of Forest Protection
and Entomology, Faculty of
Forestry and Wood Sciences, Czech
University of Life Sciences,
Kamýcká 1176, CZ-165 21, Prague 6
- Suchdol, Czech Republic
E-mail: jh.dermestidae@volny.cz

Correspondence:

Jiří HÁVA

Department of Forest Protection
and Entomology, Faculty of
Forestry and Wood Sciences, Czech
University of Life Sciences,
Kamýcká 1176, CZ-165 21, Prague 6
- Suchdol, Czech Republic
E-mail: jh.dermestidae@volny.cz

Description of *Sodaliatoma brunnea* sp. nov. (Coleoptera: dermestidae: megatomiinae) from Colombia

Jiří HÁVA

ABSTRACT

Sodaliatoma brunnea sp. nov. from Colombia is described, illustrated and compared with a known species *Sodaliatoma konvickai* Háva, 2013.

Keywords: Taxonomy, new species, Coleoptera, Dermestidae, Megatomiinae, *Sodaliatoma*, Colombia, Neotropical Region.

1. Introduction

The recently described genus *Sodaliatoma* Háva, 2013 belongs to the subfamily Megatomiinae, tribe Megatomini and has still contained only one species described from Peru. In the present article, there is a description of the second species.

2. Material and methods

2.1. The following measurements were made:

Total length (TL) - linear distance from anterior margin of pronotum to apex of elytra.

Pronotal length (PL) - maximum length measured from anterior margin to posterior margin.

Pronotal width (PW) - maximum linear transverse distance.

Elytral length (EL) - linear distance from shoulder to apex of elytron.

Elytral width (EW) - maximum linear transverse distance.

2.2. Abbreviation: JHAC - Jiří Háva, Private Entomological Laboratory & Collection, Únětice u Prahy, Prague-west, Czech Republic.

3. Systematics

3.1. Subfamily Megatomiinae

3.2. Tribe Megatomini

3.3. Genus *Sodaliatoma* Háva, 2013

3.4. *Sodaliatoma brunnea* sp. nov.

3.4.1. Type material: Holotype (♀) labelled: „Colombia, Quindio, 11 km E. Calarca, 5.iii.1974, 7000’”. “Holotype deposited in JHAC. The type specimen is equipped with red, printed labels bearing the text as follows: „HOLOTYPE *Sodaliatoma brunnea* sp. nov. Jiří Háva det. 2014”.

3.4.2. Description

Habitus: Fig. 1. Body parallel, long TL 2.2 PL 0.4 PW 0.9 EL 1.6 EW 1.1 (in mm). Dorsal integument with head and pronotum black and elytra from dark brown on humeri to light brown on apex. Ventral integument with thorax, abdomen and antennae brown, legs brown.



Fig 1: *Sodaliatoma brunnea* sp. nov. (holotype) - habitus, dorsal aspect (holotype).

Head with median ocellus. Coarsely punctured. Pubescence of head light brown with intermixed white-grey setation. Labial palpi dark brown. Eyes large with brown microsetation. Antenna brown, consisting of 11 antennomeres, covered with brown hairs; antennal club formed by three antennomeres (Fig. 2).



Fig 2: *Sodaliatoma brunnea* sp. nov. (holotype) - antennae of female.

Pronotum black, discally finely punctate, near anterior angles and posteriorly coarsely punctate, lateral parts not dentate, near scutellum with small depressions. Covered by white-grey pubescence with intermixed light brown pubescence discally (Fig. 1). Antennal cavity completely closed.

Scutellum oval, small, visible but minute, without setation. Elytra with punctures on disc subequal in size to those on pronotum. Pubescence of elytra consisting of white-grey and light brown hairs. White-grey pubescence forming two transverse fasciae on each elytron (Fig. 1). Epipleuron unicolorously brown, with white-grey hairs.

Prosternum coarsely punctate, prosternal process moderately long and broad, with median carina. Mesosternal disc with punctures on disc subequal in size to those on pronotum and prosternum, metasternum without discal striae.

Abdominal ventrites dark brown, covered by white-grey pubescence; first visible abdominal ventrite with short, distinct oblique discal striae.

Legs brown with short white-grey setae. Male unknown.

3.4.3. Diagnosis: The new species of the new genus *Sodaliatoma* Háva, 2013 differs from the species *S. konvickai* Háva, 2013 by the following characters.

1(2) antennae as in Fig. 2: pronotum without lateral dentation; white-grey pubescence forming two transverse fasciae on each elytron *S. brunnea* sp. nov.

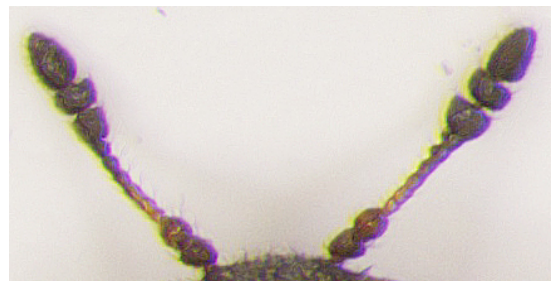


Fig 3: *S. konvickai* Háva, 2013 - antennae of female.

2(1) antennae as in Fig. 3; pronotum slightly dentate; white-grey pubescence forming two transverse fasciae and an apical spot on each elytron *S. konvickai* Háva, 2013

3.4.4. Distribution Colombia.

3.4.5. Etymology Named according to the brown body.

4. Acknowledgements

This research was supported by the Internal Grant Agency (IGA n.20124364) Faculty of Forestry and Wood Sciences, Czech University of Life Sciences Prague.

6. References

- Háva J. Description of *Sodaliatoma konvickai* gen. et sp. nov. (Coleoptera: Dermestidae: Megatominae) from Peru. *Boletín de la Sociedad Entomológica Aragonesa* 2013; 52: 113-115.