



E-ISSN: 2320-7078

P-ISSN: 2349-6800

JEZS 2019; 7(4): 204-212

© 2019 JEZS

Received: 07-05-2019

Accepted: 09-06-2019

M Mohamed Faizullah

Teaching Assistant, Dr. M.G.R
Fisheries College and Research
Institute, TNR, Tamil Nadu Dr.
J. Jayalalithaa Fisheries
University, Nagapattinam,
Tamil Nadu, India

CBT Rajagopalsamy

Professor and Head, Department
of Aquaculture, Dr. M.G.R
Fisheries College and Research
Institute, Ponneri, Tamil Nadu
Dr. J. Jayalalithaa Fisheries
University, Nagapattinam,
Tamil Nadu, India

B Ahilan

Dean, Dr. M.G.R Fisheries
College and Research Institute,
Ponneri, Tamil Nadu Dr. J.
Jayalalithaa Fisheries
University, Nagapattinam,
Tamil Nadu, India

N Daniel

Assistant professor, Institute of
Postgraduate Studies, OMR,
Tamil Nadu Dr. J. Jayalalithaa
Fisheries University,
Nagapattinam, Tamil Nadu,
India

Correspondence

M Mohamed Faizullah

Teaching Assistant, Dr. M.G.R
Fisheries College and Research
Institute, TNR, Tamil Nadu Dr.
J. Jayalalithaa Fisheries
University, Nagapattinam,
Tamil Nadu, India

Application of biofloc technology (BFT) in the aquaculture system

M Mohamed Faizullah, CBT Rajagopalsamy, B Ahilan and N Daniel

Abstract

The aquaculture industry is growing fast at a rate of ~9% per year since the 1970s. However, this industry has come under scrutiny for contribution to environmental degradation and pollution. As a result, requirement for more ecologically sound management and culture practices remains fully necessary. Moreover, the expansion of aquaculture is also restricted due to land costs and by its strong dependence on fishmeal and fish oil. Such ingredients are one of the prime constituents of feed for commercial aquaculture. Feed costs represent at least 50% of the total aquaculture production costs, which is predominantly due to the cost of protein component in commercial diets. Interest in closed aquaculture systems is increasing, mostly due to bio-security, environmental and marketing advantages over conventional extensive and semi-intensive systems. When water is reused, some risks such as pathogen introduction, escapement of exotic species and discharging of waste water (pollution) are reduced and even eliminated. The environmental friendly aquaculture system called "Biofloc Technology (BFT)" is considered as an efficient alternative system since nutrients could be continuously recycled and reused. The sustainable approach of such system is based on growth of microorganism in the culture medium, benefited by the minimum or zero water exchange. These microorganisms (biofloc) has two major roles: (i) maintenance of water quality, by the uptake of nitrogen compounds generating "in situ" microbial protein; and (ii) nutrition, increasing culture feasibility by reducing feed conversion ratio and a decrease of feed costs. The objective of this chapter is to review the application of Biofloc Technology (BFT) in the aquaculture system and describes the utilization of biofloc biomass as an ingredient for compounded feeds. An addition goal is to clarify the basic aspects of such technology, aiming to encourage further research.

Keywords: Biofloc, microbial protein, C/N ration, micro-organisms and water quality

Introduction

World Aquaculture is growing at an annual rate of 8.9–9.1% since the 1970s. This high growth rate is needed to solve the problem of shortage of protein food supply and which is particularly situated in the developing countries (Subasinghe, 2005; Gutierrez-Wing and Malone, 2006 and Matos *et al.*, 2006) [90, 46, 63]. However, environmental and economical limitations can hamper this growth. Especially intensive aquaculture coincides with the pollution of the culture water by an excess of organic materials and nutrients that are likely to cause acute toxic effects and long term environmental risks (Piedrahita, 2003) [80]. High-density culture in intensive systems requires high amounts of feed to be added to the systems. This will cause water quality deterioration due to the high concentrations of organic compounds (Avnimelech, 2007) [13]. Since only 20-30% of feed are assimilated in fish and the remaining 70-80% of the feed will be accumulated in the water body as uneaten feed and excretory products (Gross and Boyd, 2000; Avnimelech and Ritvo, 2003) [45]. Ammonia is usually the abundant form of combined inorganic nitrogen in aquaculture pond and it can be rather toxic to animals. Elevated concentrations of ammonia affect growth, oxygen consumption and even can eventually cause mortality of fish. Increased ambient nitrite concentration negatively affects the growth performance and survival of fish. (Colt and Tchobanoglous, 1976; Colt and Armstrong, 1981; Tucker and Robinson, 1990; Mallasen and Valenti, 2006) [29, 30, 97, 62] and also inhibits the disease resistance of the cultured fishes (Brock and Main, 1994) [20]. Ammonia-N in water exists in two forms and they are 1) unionised ammonia and 2) ionised ammonium. Among this, unionised ammonia is more toxic when compared to ammonium ion (Boyd and Tucker, 2009) [21]. Many researchers made attempt to find a solution to reduce or remove ammonia from aquaculture systems. There are several ways to eliminate ammonia from the aquaculture systems, like exchange and replace the water, use of biofiltration system, Recirculatory

Aquaculture System (RAS), reduce or stop feeding, flush the pond with fresh water, reduce the stocking density, aerate the pond, and reduce the pH level. (Thompson *et al.*, 2002) ^[94]. The use of RAS has the ability to maintain low ammonia and nitrite levels by means of nitrification (Valenti and Daniels, 2000) ^[99]. However, this is rather expensive and during an imbalance in the process, nitrite levels may rise in water (Russo and Thurston, 1991; Valenti and Daniels, 2000; Jensen, 2003) ^[84, 99, 53]. Biofloc technology (BFT) is an innovative technology which can solve the above problems. Biofloc is defined as macro aggregates composed of diatoms, macro algae, faecal pellets, exoskeleton, and remains of dead organisms, bacteria and invertebrates. Biofloc technology has become a popular technology in the farming of *Oreochromis niloticus*, *Litopenaeus vannamei*, *Macrobrachium rosenbergii* and *Penaeus monodon*. It was commercially first applied in Belize by Belize Aquaculture in North America. It also has been applied with success in shrimp farming in Indonesia and Australia (Taw, 2010) ^[93].

BFT is an aquaculture system which focused on a more efficient use of nutrient input with limited or zero water exchange system. The main principle of BFT is to recycle nutrient by maintaining a high carbon/ nitrogen (C/N) ratio in the water in order to stimulate heterotrophic bacterial growth that converts ammonia into microbial biomass (Avnimelech, 1999) ^[11]. The microbial biomass will further aggregate with other microorganisms and particles suspended in the water forming what has been called “biofloc”, which eventually can be consumed in situ by the cultured animals or harvested and processed as a feed ingredient (Avnimelech 1999; Avnimelech 2007; Crab *et al.*, 2007; De Schryver *et al.*, 2008; Kuhn *et al.*, 2008; Kuhn *et al.*, 2009; Kuhn *et al.*, 2010) ^[11, 13, 31, 37, 57-59]. BFT is therefore considered as a promising system for a sustainable and environmentally friendly aquaculture system. The term of “biofloc” applies to a compound made out of 60 to 70% of organic matter, which includes a heterogeneous mixture of microorganisms (fungus, algae, protozoan, and rotifers) and 30 to 40% of inorganic matter such as colloids, organic polymer, and dead cell. They can reach a size up to 1000µm, irregular shape, full of the pore, and allow the pass of fluids (Chu and Lee, 2004) ^[27]. In BFT, natural productivity plays an important role in recycling nutrients and maintaining the water quality (Ray *et al.*, 2010; McIntosh *et al.*, 2000) ^[81, 66]. The consumption of biofloc by shrimp or fish has demonstrated numerous benefits such as improvement of growth rate, (Wasielesky *et al.*, 2006) ^[104] decrease of FCR and associated costs in the feed. (Burford *et al.*, (2004) ^[24]. Growth enhancement has been attributed to both bacterial and algae nutritional components and which can lower the conventional feeding ration upto 30% due to the consumption of biofloc (Panjaitan, 2004) ^[78]. Burford *et al.*, (2004) ^[24] reported that more than 29% of daily food consumed for *L. vannamei* could be biofloc. In tilapia, Avnimelech *et al.*, (1994) ^[9] estimated that feed utilization is higher in BFT than fish reared in conventional water-exchange systems. Nursery phase is defined as an intermediate step between hatchery-reared early post larvae and grow-out phase (Mishra *et al.*, 2008) ^[69]. Such phase presents several benefits such as optimization of farm land, increase in survival and enhanced growth performance in grow-out ponds (Apud *et al.*, 1983; Arnold *et al.*, 2009) ^[2, 3]. Emerenciano *et al.*, (2011) ^[43] observed that presence of bioflocs resulted in the increases of 50% in weight and almost 80% in final biomass of early larval stage of fish when

compared to the conventional clear-water system. Cohen *et al.* (2005) ^[28] and Mishra *et al.* (2008) ^[69] reported higher survival rates in the rearing of fish larvae in BFT system. The growth and survival of cultured fish were not affected by the higher stocking density of 2500 and 5000 nos/sq.m and which resulted in the greater production outputs (Arnold *et al.*, (2009) ^[3]. Biofloc technology facilitates intensive culture while reducing investment and maintenance costs and incorporating the potential to recycle feed. The technology is based upon zero or minimal water exchange to maximize biosecurity while minimizing external environmental effects.

History of biofloc technology

The scientific and practical concepts of BFT evolved concurrently and independently at about the same time by Steve Hopkins and co-workers at the Waddell Mariculture Center, South Carolina and by Avnimelech and co-workers in Israel (Avnimelech, 1993; Hopkins *et al.*, 1993; Avnimelech *et al.*, 1994; Chamberlain and Hopkins, 1994) ^[8, 51, 9, 25]. The pioneers of this technology include Steve Surfing, who established Solar Aquafarms in California, a shrimp and fish farm based upon developing active microbial suspension and Hopher, Schroeder, Moav and Wohlfarth in Israel, who developed the concept of the “Heterotrophic feed web” (Hopher, 1985) ^[50]. In both cases, zero and minimal water exchange was practised. Organic residues accumulating in the pond under such conditions degrade and ammonia - N is nitrified or assimilated, by an intensive microbial community. This series of processes replace the conventional external biofilter or high water exchange systems. In essence, the microbial processes within these ponds serve as the pond water quality treatment system and microbial protein serves as a feed additive.

Uses of biofloc technology in aquaculture

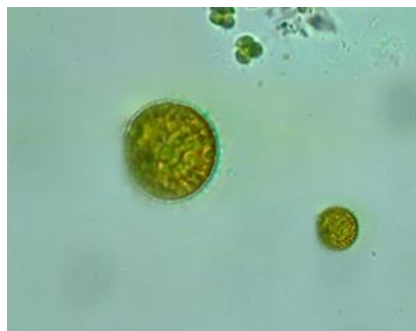
The current worldwide growth rate of the aquaculture business (8.9–9.1% per year since the 1970s) is needed in order to cope with the problem of shortage in protein food supplies, which is particularly situated in the developing countries (Subasinghe, 2005; Gutierrez-Wing and Malone, 2006; Matos *et al.*, 2006) ^[90, 46, 63]. However, environmental and economical limitations can hamper this growth since intensive aquaculture corresponds with the pollution of the culture water through the addition of an excess of organic materials and nutrients that are likely to cause acute toxic effects and long term environmental risks (Piedrahita, 2003) ^[80]. The common method for dealing with this pollution has been the use of continuous replacement of the pond water (Gutierrez-Wing and Malone, 2006) ^[46]. However, the water volume needed for even small to medium aquaculture systems can reach up to several hundreds of cubic meters per day. A second approach is the removal of the major part of the pollutants in the water as it performed in recirculating aquaculture systems (RAS) with different kinds of biological water treatment systems (Gutierrez-Wing and Malone, 2006) ^[46]. The amount of water that needs to be replaced on a daily basis generally is reduced to about 10% of the total water volume (Twarowska *et al.*, 1997) ^[98]. However, RAS technique is a costly one in terms of capital investment and operational energy and labour costs (Gutierrez-Wing and Malone, 2006) ^[46].

Biofloc system

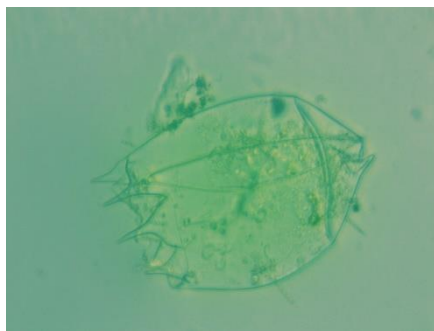
The bioflocs are conglomerates of microbes, macro

aggregates composed of diatoms, microalgae, protozoa, faecal pellets, exoskeleton, and remains of dead organisms, dead

organic particles, bacteria and invertebrates.



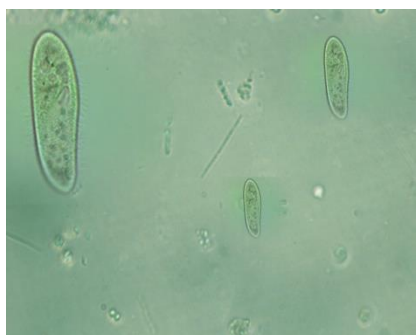
Coscinodiscus sp



Brachionus sp



Cyclidium sp



Paramecium sp



Triceratium sp



Desmodemus sp

Bioflocs found in ponds are porous, light and have a diameter of 0.1 to a few millimeter. The basic requirements for biofloc system operation include high stocking density with 130-150 nos /m² and high aeration of 28 to 32 Hp/ha with correct paddlewheel position in ponds. Ponds must be lined with concrete or high-density polyethylene (HDPE), and pelleted grain and molasses are added to the culture water. A maximum fish production of nearly 50 mt/ha was achieved in small ponds in Indonesia. The microorganisms play major roles with respect to natural productivity, nutrient cycling, water quality and the nutrition of the cultured animals (Moriarty 1997; McIntosh *et al.*, 2000) [66]. Control of the predominantly heterotrophic bacterial community over autotrophic microorganisms is achieved by the use of high carbon to nitrogen ratios (Avnimelech *et al.*, 1989; 1992; 1994; Kochva *et al.*, 1994; Avnimelech, 1998; 1999) [6, 7, 9, 56, 10, 11]. The uptake of ammonia by bacteria improves water quality and increases microbial biomass production (Avnimelech, 1999) [11]. These processes serve as fuel for operating the "floc system" (Burford *et al.*, 2004; Cohen *et al.*, 2005) [24, 28]. Furthermore, a nutrient-rich feed source is available 24 h per day and could reduce artificial feed inputs and costs (Browdy *et al.*, 2001; Avnimelech 2007 [22, 13], Samocha *et al.*, 2007) [87]. Avnimelech, (2007) [13] and Hari *et al.*, (2004 and 2006) [48, 49] opined that the theoretical and practical calculation leads to the opinion that BFT could reduce the feed cost. The survival rate of cultivable finfish in BFT culture system is higher than that of in recirculating aquaculture system and control culture system (Suresh and Lin, 1992; Azim and little, 2008) [92, 14]. Craig and Helfrich (2002) [35] observed that biofloc do not allow for a complete replacement of traditional fish feed but still can bring about a substantial decrease in the total production costs. Tacon *et al.* (2002) [95] also found that biofloc can reduce the production cost through reduction in the feed cost and in addition to that it brings other beneficial effects such as better water quality

which leads to an environmental friendly aquaculture practices and increase biosecurity. Biofloc technologies (BFT) were developed to minimize effluent discharge, protect the surrounding water resources and improve farm biosecurity (Weirich *et al.*, 2002; Burford *et al.*, 2003; Avnimelech 2007) [105, 23, 13]. Large microbial clusters are formed due to the flocculation of cells with feed particles and which favors subsequent uptake by fish. Avnimelech *et al.*, 1982; Beveridge *et al.*, 1989; Beveridge and Baird, 2000) [16, 15]. Avnimelech (2007) [13] confirmed the uptake of biofloc by Mozambique tilapia using stable nitrogen isotope labelling technique.

Biofloc- Microbial communities

When fishes are reared at high densities without water exchange biofloc develop in the ponds that have several advantages for culture. The diverse microbial community in the biofloc dominated systems was thought to increase competition with potentially pathogenic microbes including *Vibrios*, reducing problems with non-excludable pathogens (Bratvold and Browdy, 1999) [18]. In addition, the natural productivity associated with these bioflocs has been shown to provide growth-enhancing factors which improve shrimp production (Moss *et al.*, 1992; Moss, 1995; Decamp *et al.*, 2002; Moss, 2002; Burford *et al.*, 2004; Wasileski *et al.*, 2006) [72-74, 95, 75, 24]. Additional research has been conducted on the dynamics of the microbial communities in these systems, methods for measuring microbial activity and some techniques for manipulation of the make-up of these communities (Bratvold and Browdy, 1998; 1999, 2001; Browdy *et al.*, 2001a; Burford *et al.*, 2003; Decamp *et al.*, 2003; Ebeling, 2006) [19, 22, 17, 18, 23, 41]. Various factors like salinity, light, and type of culture system affect the microbial composition of biofloc (Anand, *et al.*, 2013) [1]. Anand *et al.* (2013) [1] observed that the major microbial community developed in the biofloc comprise of *Vibrionaceae*, *Bacillus*

sp and *Lactobacillus sp* with the majority of gram-negative bacteria.

Biofloc -Microbial Nutrition

The microbial protein, aggregated in microbial flocs serves as a rich source of amino acids and growth factors for fish and shrimp, leading to significant recycling of protein and higher utilization of feed (Avnimelech *et al.*, 1994; Chamberlain *et al.*, 2001b; Tacon *et al.*, 2002) [9, 95]. Microbes proved to be an effective source of proteins, vitamins, and essential fatty acids



Imhoff Cone



Biofloc Tank

Use of Organic carbon in Microbes

Avnimelech (1999) [11] calculated the carbohydrate requirement (20g) to immobilize 1.0 g of N, based on a microbial C/N-ratio. A concentration of about 10 mg ammonia -N per liter could almost completely be removed within 5 h after the addition of glucose at C/N ratio of 10 without the accumulation of nitrite and nitrate in the culture pond (Avnimelech, 1999) [11]. This can be achieved by adding different types of organic carbon source, resulting in a production of microbial proteins that could be reused as fish food. Hari *et al.* (2006) [49] stated that carbohydrate addition in combination with a decreased dietary protein level improved the sustainability of shrimp farming in extensive shrimp culture systems through increased nitrogen retention in harvested shrimp biomass, reduced demand for feed protein, reduced concentrations of potentially toxic TAN and nitrite-N in the system, and reduced water based nitrogen discharge to the environment. If carbohydrate was added to the water column to enhance heterotrophic bacterial protein production, the protein level in the diet could be reduced from 40% to 25%, without compromising fish production. The control of inorganic nitrogen accumulation in the pond is based on carbon metabolism and nitrogen immobilization into microbial cells (Avnimelech, 1999) [11]. Bacteria and other microorganisms use carbohydrate as a food, to generate energy and to grow. The addition of carbohydrates is a potential means to reduce the concentration of inorganic nitrogen in intensive aquaculture systems. By adding carbohydrate to the water, microbes are forced to immobilize any inorganic nitrogen present in the water, preferably to immobilize TAN. This process is relatively fast if the availability of the carbonaceous substrate added to the culture pond is high (Avnimelech, 1999) [11].

Biofloc-Disease management

The heterotrophic microbial biomass is suspected to have a controlling effect on pathogenic bacteria (Michaud *et al.*, 2006). Short chain fatty acids as bio-control agents against

for shrimp and several fish species (Taconet *et al.*, 2002) [95]. It was shown that proteins can be recycled through the activity of aerobic microorganisms and that protein utilization is doubled in BFT ponds (Avnimelech *et al.*, 1994; McIntosh, 2000b) [9, 65]. Nitrogen produced in the aquatic system could be controlled by feeding the heterotrophic bacteria with carbohydrate and which can synthesis microbial protein through the uptake of inorganic nitrogen from the water. (Megahed 2010; Panjaitan, 2011; Rostikarita and Liliwalim, 2012; Liu *et al.*, 2014; Rostika, 2014; Ogello *et al.*, 2014) [67, 79, 82, 61, 83, 76].

pathogenic diseases are of particular interest. It was reported that the application of 20 mm of butyric acid to the culture water of *Artemia franciscana* resulted in the protection of these organisms against pathogenic *Vibrio campbellii* (Defoirdt *et al.*, 2006) [39]. In this respect, research concerning certain special components in microbial cells is warranted. Emphasis can be put on the organic storage product poly- β -hydroxybutyrate (PHB). This is an intracellular biodegradable polymer produced by a wide variety of micro-organisms and is involved in bacterial carbon and energy storage (Defoirdt *et al.*, 2007) [40]. It is considered to be depolymerised in the gut of higher organisms and has also been shown to act as a preventive or curative protector of *A. franciscana* against *Vibrio* infections (Defoirdt *et al.*, 2007) [40]. The accumulation of PHB by mixed cultures in BFT can occur under specific conditions determined by the presence of a growth limiting factors such as nitrogen and the presence of an excess carbon source (Salehizadeh and Van Loosdrecht, 2004) [86]. Upon release from the bacterial cell, e.g. in the case of cell death and lyses, degradation of PHB is performed by the activity of extracellular PHB depolymerase enzymes which are widely distributed among bacteria and fungi (Jendrossek and Handrick, 2002) [52]. This results in the release of 3-hydroxybutyrate into the surrounding environment (Trainer and Charles, 2006) [96]. As such, PHB might offer a prebiotic advantage for aquaculture. It was observed that the regular addition of carbon to the culture is known to select for polyhydroxyalkanoate (PHA) accumulating bacteria (Salehizadeh and Von Loosdrecht, 2004) [86] such as *Alcaligenes seutrophus*, *Azotobacter vinelandii*, *Pseudomonas oleovorans* and others that synthesise PHA granules. Such granules are synthesised under conditions of nutrient stress that is when an essential nutrient like nitrogen is limited in the presence of an excess carbon source (Avnimelech, 1999) [11]. Enzyme hydrolysis is generally carried out by PHA depolymerase produced by various micro-organisms such as *Aspergillus fumigatus*, *Pseudomonas fluorescens*, and others (Khanna and Srivastava, 2004) [55]. Chemical hydrolysis can

be carried out by treating the PHA with NaOH (Yu *et al.*, 2005) [106]. Defoirdt *et al.*, (2007) [40] reported that commercial polyhydroxy butyrate (PHB) particles or PHB accumulating bacteria offered a preventive and curative protection to *Artemia* against luminescent vibriosis. They observed complete protection at a level of 1000 mg/l of commercial PHB or 10^7 cells/ml of PHB accumulating bacteria. Recently, Rostika (2014) [83] observed that the biofloc production in the BFT system has the ability to synthesis compound like biopolymer, bacteriocins against bacterial pathogen and this observation confirms the statement documented by Crab *et al.* (2012) [34].

Biofloc - Water quality Management

Crab *et al.* (2012) [34] stated that BFT is a technique of enhancing water quality in aquaculture through balancing C/N ratio in the system. Nitrogen control is stimulated by feeding bacteria with carbohydrates, and through the subsequent uptake of nitrogen from the water, by the synthesis of microbial protein. The relationship between adding carbohydrates, reducing ammonia -N and producing microbial proteins depends on the microbial conversion coefficient; the C/N ratio in the microbial biomass and the carbon contents of the added material (Avnimelech, 1999) [11]. The C/N ratio has been widely used as an index of the rate at which organic matter decomposes. If the organic matter is low in nitrogen content (i.e. a high C/N ratio), some of the nitrogen for microbial growth will be obtained from the water column and will become immobilised as microbial protein. The microbial population comprising of heterotrophic bacteria in BFT culture tank consume a higher level of dissolved oxygen as much as 77% of the total oxygen consumption (Olah *et al.*, 1987; Visscher and Duerr, 1991; Avimelechi *et al.*, 1992; Sun *et al.*, 2001) [77, 103, 7, 91]. However, Avnimelech, (1999) [11] stated that the C/N ratio in the pond should be 10.75, to eliminate inorganic nitrogen. Crab *et al.*, (2009) [32] observed that carbon rich and low protein feed (in experiment feed) could sustain 1:20 C/N ratio and limited the presence of inorganic nitrogen species even at high stocking densities of 20 kg/m³ at harvest. If carbon and nitrogen are well balanced in the system, ammonia-N in addition to organic nitrogenous waste will be converted into bacterial biomass (Schneider *et al.*, 2005) [88]. By adding carbohydrates to the pond, bacterial growth is stimulated and nitrogen uptake takes place through the production of microbial proteins (Avnimelech, 1999) [11]. This promoted nitrogen uptake by bacterial growth decreases the ammonia-N concentration more rapidly than nitrification (Hargreaves, 2006) [47] and immobilization of ammonia-N by heterotrophic bacteria occurs much more rapidly because the growth rate and microbial biomass yield per unit substrate of heterotrophs are a factor 10 higher times than that of nitrifying bacteria. The microbial biomass yield per unit substrate of heterotrophic bacteria is about 0.5 g biomass C/g when substrate C was used (Eding *et al.*, 2006) [42]. Uptake of the bio-flocs by fish depends most probably on the fish species and feeding traits, fish size, floc size and floc density (Avnimelech, 2007) [13]. The fluctuation in the level of total alkalinity was very much in biofloc fish culture tank, while it was stable in control tanks (Azim and little, 2008) [14].

Biofloc as a feed for fishes

Recent studies have indicated that controlled application of nutrient-dense high-protein feeds can improve growth performance when compared to lower protein diets offered on

an iso-nitrogenous basis (Kureshy and Davis, 2002; Davis and Venero, 2005; Venero *et al.*, 2007, 2008) [60, 36, 101, 102]. The formulation of feeds can have an important indirect effect on the system microbial community. Inputs of carbon and nitrogen must be considered as part of overall management of the bio-floc communities upon which system stability depends. Thus some researchers suggest a lower protein feed formulation strategy to encourage heterotrophic bio-floc production (Avnimelech, 1999; McIntosh, 2000a; Ebeling *et al.*, 2006) [11, 64, 41]. The contribution of microbial metabolism to fish nutrition was defined by a group of investigators in Israel (Moav *et al.*, 1977; Schroeder, 1978) [70, 89] as the heterotrophic food web. According to this concept, fish can feed, directly or indirectly, on primary producers, yet they can also feed on bacteria degrading residues, applied to the pond, such as manure. Kuhn *et al.* (2009) [58] reported that microbial floc incorporated fish diet enhanced that mean growth up to 65%, when compared with the control diets and Rostikarita and Liliwalim, (2012) [82] observed a higher rate of survival through the incorporation of biofloc at 10% level in the feed. The average protein conversion ratio (PCR) in fish or shrimp production is 4. Protein utilisation is significantly higher in BFT systems. Adding carbonaceous substrates causes microbes to harvest the excreted nitrogen and produce microbial proteins that are then consumed by the fish. It may be said that the fish eat the protein twice: once with the feed and then as microbial proteins. The PCR obtained in BFT commercial systems is about 2, whereas average protein utilisation is 46%, twice as high as in conventional systems (Avnimelech *et al.*, 1994; Chamberlain *et al.*, 2001a) [9, 26]. Protein efficiency in experimental tanks, as high as 65% was demonstrated by Velasco *et al.* (1998) [100]. The bacterial protein and new cells (single-cell protein) synthesised by the heterotrophic bacterial population are utilised directly as a food source by the cultured organisms (carp, tilapia, shrimp), thus lowering the demand for supplemental feed protein (Avnimelech, 1999) [11]. Hariet *et al.* (2004) [48] reported that culture fish could effectively utilise the additional protein derived from the increased bacterial biomass as a result of carbohydrate addition. Burford *et al.* (2004) [24] suggested that "flocculated particles" rich in bacteria and phytoplankton could contribute substantially to the nutrition of the cultivable fish in intensive fish ponds.

Biofloc as feed

Several studies have been conducted using biofloc technology for the culture of tilapia (Azim and Little 2008; Asaduzzaman *et al.*, 2009) [14, 4] and shrimps (Kuhn *et al.*, 2008, 2010; Asaduzzaman *et al.*, 2009; Ray *et al.*, 2011; Emerenciano *et al.* 2012) [57, 59 44, 4]. Kuhn *et al.* (2009) [58] evaluated the growth of cultivable fish using microbial floc meal as a replacement ingredient for fish meal and soybean protein and concluded that microbial floc meal outperformed the control diets in terms of weight gain per week without any differences in survival. Further, Anand *et al.* (2013) [1] reported that proximate composition of biofloc contained 24.30% protein, 3.53% crude lipid, 29.24% nitrogen free extract, 31.98% ash content and 10.75% acid insoluble ash content. Rostika, (2014) [83] also recorded the proximate composition of floc with 53.5% protein, 2.6% crude protein, 4.0% crude fibre and 7.5% ash content. While Ogello *et al.* (2014) [76] stated that biofloc produced in BFT system has adequate protein, lipid, carbohydrate and fatty acids. Ju *et al.* (2008) [54] stated that chlorophyll-dominated biofloc which contained higher

crude protein content (42%) than flocs dominated by diatoms (26 -34%) and bacteria (38%) and further the has been documented that biofloc is a rich source of bio active compounds like carotenoids, chlorophylls, phytosterols, bromophenols, amino sugars. Kuhn *et al.* (2009; 2010) [58, 59] stated that the use of biofloc as a dietary ingredient in feed preparation is found to enhance the growth rate of fish. Azim and Little (2008) [14], found that the BFT treatment contributed 44-46% greater individual weight gain and net fish production than those in the control. Ogello *et al.* (2014) [76] recorded that highest growth rate (0.3g/day) and yield (300 tonnes/ha) along with 20% reduction in fish feed in well-managed biofloc ponds, and this growth is in similar with the observation by Avnimelech *et al.* (1994) [9].

Conclusion

Biofloc technology brings a major advantage of minimizing consumption and release of water, recycling in situ nutrients, organic matter and introduction of pathogen were reduced, improving water quality of the fish farm. Consumption of microorganisms in biofloc technology reduces FCR and feed cost. Also, microbial community is also able to rapidly utilize dissolved nitrogen leached from fish faeces and uneaten food and convert it into microbial protein. Biofloc technology Highers the stocking density, high yield production so its useful for fish farmers. The BFT system normally provides good health environmental condition and hence the survival rate of the cultivable fish will be in the higher side. This biofloc technology could be made as a cutting edge technology for the benefit of fish farmers so as to increase the fish production.

References

- Anand PS, Kohli MPS, Kumar S, Sundaray JK, Sundaray JK, Dam Roy S *et al.* Effect of dietary supplementation of biofloc on growth performance and digestive enzyme activities in *Penaeus monodon*. *Aquaculture*, 2013, 1-44.
- Apud FD, Primavera JH, Torres PL. *Farming of Prawns and Shrimps*. Extension Manual (5). Iloilo, Philippines SEAFDEC Aquaculture Department. 1983, 67
- Arnold SJ, Coman FE, Jackson CJ, Groves SA. High-intensity, zero water exchange production of juvenile tiger shrimp, *Penaeus monodon*: An evaluation of artificial substrates and stocking density. *Aquaculture*, 2009; 293(1, 2):42-48.
- Asaduzzaman M, Wahab MAM, Verdegem MCJ, Benerje S, Akter T, Hasan MM *et al.* Effects of addition of tilapia *Oreochromis niloticus* and substrates for periphyton developments on pond ecology and production in C/N-controlled freshwater prawn *Macrobrachium rosenbergii* farming systems. *Aquaculture*. 2009; 287(3, 4):371-380.
- Avnimelech Y, Troeger WW, Reed LW. Mutual flocculation of algae and clay: evidence and implications. *Science*, 1982; 216:63-65.
- Avnimelech Y, Mokady S, Schroeder GL. Circulated ponds as efficient bioreactors for single cell protein production. *Israeli Journal of Aquaculture -Bamidegh*. 1989; 41:58-66.
- Avnimelech Y, Mozes N, Weber B. Effects of aeration and mixing on nitrogen and organic matter transformations in simulated fish ponds. *Aquaculture Engineering*. 1992; 11(3):157-169.
- Avnimelech Y. Control of microbial activity in aquaculture systems: active suspension ponds. *World Aquaculture*. 1993; 34(4):19-21.
- Avnimelech Y, Kochva M, Diab S. Development of controlled intensive aquaculture systems with a limited water exchange and adjusted carbon to nitrogen ratio. *Israel Journal of Aquaculture- Bamidegh*. 1994; 46:119-131.
- Avnimelech Y. Minimal discharge from intensive fish ponds. *Journal of the World Aquaculture Society*. 1998; 29:32-37.
- Avnimelech Y. Carbon/Nitrogen ratio as a control element in aquaculture systems. *Aquaculture*. 1999; 176(3, 4):227-235.
- Avnimelech Y. Bio-filters: the need for an new comprehensive approach. *Aqua. Eng*. 2006; 34(3):172-178.
- Avnimelech Y. Feeding with microbial flocs by tilapia in minimal discharge bioflocs technology ponds. *Aquaculture*. 2007; 264(1-4):140-147.
- Azim M, Little DC. The biofloc technology (BFT) in indoor tanks: water quality, biofloc composition, and growth and welfare of Nile tilapia (*Oreochromis niloticus*). *Aquaculture*, 2008; 283(1-4):29-35.
- Beveridge MCM, Baird DJ. Diet, feeding, and digestive physiology. In: Beveridge M.C.M. and B.J. McAndrew (Eds.), *Tilapias: Biology and Exploitation*, Dordrecht: Kluwer Academic Publishers, 2000, 59-87.
- Beveridge MCM, Begum M, Frerichs GN, Millar S. The ingestion of bacteria in suspension by the tilapia (*Oreochromis niloticus*). *Aquaculture*. 1989; 81(3, 4):373-378.
- Bratvold D, Browdy CL. Simple electrometric methods for estimating microbial activity in aquaculture ponds. *Aquaculture Engineering*. 1998; 19(1):29-40.
- Bratvold D, Browdy CL. Disinfection, Microbial community establishment and shrimp production in a prototype biosecure pond. *Journal of the world aquaculture society*. 1999; 30(4):422-432.
- Bratvold D, Browdy CL. Effects of sand sediment and vertical surfaces on production, water quality and microbial ecology in an intensive *Litopenaeus vannamei* culture system. *Aquaculture*. 2001; 195:81-94.
- Brock JA, Main KL. *A guide to the common problems and disease of cultured Penaeus vannamei*. Baton Rouge, LA: The World Aquaculture Society, 1994, 242.
- Boyd CE, Tucker CS. *Pond aquaculture water quality management*. New Delhi: Springer (India) Private limited, 2009, 700.
- Browdy CL, Bratvold D, Stokes A, McIntosh RP. Perspectives on the application of closed shrimp culture systems: In C.K. Browdy and. E. Jory (Eds), *The New Wave: Proceedings of the Special Session on Sustainable Shrimp Culture*. Aquaculture Baton Rouge, LA: World Aquaculture Society, 2001, 20-34.
- Burford MA, Thompson PJ, McIntosh RP, Bauman RH, Pearson DC. Nutrient and microbial dynamics in high-intensity, zero-exchange shrimp ponds in Belize. *Aquaculture*. 2003; 219(1-4):393-411.
- Burford MA, Thompson PJ, McIntosh RP, Bauman RH, Pearson DC. The contribution of flocculated material to shrimp (*Litopenaeus vannamei*) nutrition in a high density, zero exchange system. *Aquaculture*. 2004; 232(1-4):525-537.
- Chamberlain GW, Hopkins SJ. Reducing water use and

- feed cost in intensive ponds. *World Aquaculture*. 1994; 25:29-32.
26. Chamberlain G, Avnimelech Y, McIntosh RP, Velasco M. Advantages of aerated microbial reuse systems with balanced C/N. I: Nutrient Transformation and Water Quality Benefits. *Global Aquaculture Advocate*. 2001a; 4(2):53-56.
 27. Chu C, Lee D. Multiscale structures of biological flocs. *Chemical Engineering Science*. 2004; 59(8, 9):1875-1883.
 28. Cohen JM, Samocha TM, Fox JM, Gandy RL, Lawrence AL. Characterization of water quality factors during intensive raceway production of juvenile *L. vannamei* using limited discharge and biosecure management tools. *Aquaculture Engineering*. 2005; 32(3, 4):425-442.
 29. Colt J, Tchobanoglous G. Evaluation of the short term toxicity of nitrogenous compounds to channel catfish, *Ictalurus punctatus*. *Aquaculture*. 1976; 8(3):209-224.
 30. Colt J, Armstrong D. Nitrogen toxicity to fish, crustaceans and molluscs. In: Lochie Jo Allen, Edward C Kinney (Eds.), *Proceedings of Bio-engineering symposium for Fish Culture*, Bethesda: American Fisheries Society, 1981, 34-47.
 31. Crab R, Avnimelech Y, Defoirdt T, Bossier P, Verstraete W. Nitrogen removal techniques in aquaculture for a sustainable production. *Aquaculture*. 2007; 270(1-4):1-14.
 32. Crab R, Kochva M, Verstraete W, Avnimelech Y. Bioflocs technology application in over-wintering of tilapia. *Aquaculture Engineering*. 2009; 40:105-112.
 33. Crab R, Chielens B, Wille M, Bossier PC, Verstraete W. The effect of different carbon sources on the nutritional value of bioflocs, a feed for *Macrobrachium rosenbergii* post larvae. *Aquac Res.*, 2010; 41:559-567.
 34. Crab R, Defoirdt T, Bossier P, Verstraete W. Biofloc technology in aquaculture: Beneficial effects and future challenges. *Aquaculture*. 2012; 356:351-356.
 35. Craig S, Helfrich LA. *Understanding Fish Nutrition, Feeds and Feeding* (Publication 420-256). York town, Virginia: Virginia Cooperative Extension, Virginia Polytechnic Institute and State University, 2002, 1-4.
 36. Davis DA, Venero JA. Rethinking feeding for cultured shrimp. *Global Aquaculture Advocate*. 2005; 10:78-81.
 37. De Schryver P, Crab R, Defoirdt T, Boon N, Verstraete W. The basics of bio-flocs technology: the added value for aquaculture. *Aquaculture*. 2008; 277(3, 4):125-137.
 38. Decamp O, Conquest L, Forster I, Tacon AGJ. The nutrition and feeding of marine shrimp within zero-water exchange aquaculture production system: role of Eukaryotic microorganisms. In: C.S Lee and P. O'Bryen, (eds.), *Microbial Approaches to Aquatic Nutrition within Environmentally Sound Aquaculture Production Systems*, Baton Rouge, LA: World Aquaculture Society. 2002, 79-86.
 39. Defoirdt T, Halet D, Sorgeloos P, Bossier P, Verstraete W. Short-chain fatty acids protect gnotobiotic *Artemia franciscana* from pathogenic *Vibrio campbellii*. *Aquaculture*, 2006; 261(2):804-808.
 40. Defoirdt T, Halet D, Vervaeren H, Boon N, Vande Wiele T, Sorgeloos P *et al.* The bacterial storage compound poly- β -hydroxybutyrate protects *Artemia franciscana* from pathogenic *Vibrio campbellii*. *Environmental Microbiology*. 2007; 9(2):445-452.
 41. Ebeling JM, Timmons MB, Bisogni JJ. Engineering analysis of the stoichiometry of photoautotrophic, autotrophic and heterotrophic removal of ammonia-nitrogen in aquaculture systems. *Aquaculture*. 2006; 257:346-358.
 42. Eding EH, Kamstra A, Verreth JAJ, Huisman EA, Klapwijk A. Design and operation of nitrifying trickling filters in recirculating aquaculture: a review. *Aquaculture Engineering*. 2006; 34(3):234-260.
 43. Emerenciano M, Ballester ELC, Cavalli RO, Wasielesky W. Effect of biofloc technology (BFT) on the early post larval stage of pink shrimp *Farfantepenaeus paulensis*: growth performance, floc composition and salinity stress tolerance. *Aquac. Int.*, 2011; 19(5):891-901.
 44. Emerenciano M, Ballester ELS, Cavalli RO, Wasielesky W. Biofloc technology application as a food source in a limited water exchange nursery system for pink shrimp *Farfantepenaeus brasiliensis* (Latreille, 1817). *Aquaculture Research*. 2012; 43(3):447-457.
 45. Gross A, Boyd CE. Nitrogen transformations and balance in channel catfish ponds. *Aquaculture Engineering*. 2000; 24(1):1-14.
 46. Gutierrez-Wing MT, Malone RF. Biological filters in aquaculture: trends and research directions for freshwater and marine applications. *Aquaculture Engineering*. 2006; 34(3):163-171.
 47. Hargreaves JA. Photosynthetic suspended growth systems in aquaculture. *Aquaculture Engineering*. 2006; 34(3):344-363.
 48. Hari B, Kurup BM, Varghese JT, Schrama JH, Verdegem MCJ. Effects of carbohydrate addition on production in extensive shrimp culture system. *Aquaculture*. 2004; 241:179-194.
 49. Hari B, Kurup BM, Varghese JT, Schrama JW, Verdegem MCJ. The effect of carbohydrate addition on water quality and the nitrogen budget in extensive shrimp culture systems. *Aquaculture*, 2006; 252(2-4):248-263.
 50. Hopher B. Aquaculture intensification under land and water limitations. *Geo Journal*. 1985; 10(3):253-259.
 51. Hopkins JS, Hamilton RD, Sandifer PA, Browdy LC. Effect of water exchange rate on production, water quality, effluent characteristics and nitrogen budget of intensive shrimp ponds. *Journal of the World Aquaculture Society*. 1993; 24:304-320.
 52. Jendrossek D, Handrick R. Microbial degradation of polyhydroxyalkanoates. *Annu. Rev. Microbiol.* 2002; 56:403-432.
 53. Jensen FB. Nitrite disrupts multiple physiological functions in aquatic animals. *Comparative Biochemistry and Physiology*. 2003; 135(1):9-24.
 54. Ju ZY, Forster I, Conquest L, Dominy W, Kuo WC, Horgen FD. Determination of microbial community structures of shrimp floc cultures by biomarkers and analysis of floc amino acid profiles. *Aquaculture Research*. 2008; 39(2):118-133.
 55. Khanna S, Srivastava AK. Recent advances in microbial polyhydroxyalkanoates. *Process Biochemistry*. 2004; 40:607-619.
 56. Kochva M, Diab S, Avnimelech Y. Modelling of nitrogen transformation in intensively aerated fish ponds. *Aquaculture*. 1994; 120(1-2):95-104.
 57. Kuhn DD, Boardman GD, Craig SR, Flick GJ, Mclean E. Use of microbial floc generated from tilapia effluent as a nutritional supplement for shrimp, *Litopenaeus vannamei* in recirculating aquaculture system. *Journal of the World*

- Aquaculture Society. 2008; 39(1):72-78.
58. Kuhn DD, Boardman GD, Lawrence AL, Marsh L, Flick GJ. Microbial floc meal as a replacement ingredient for fish meal and soybean protein in shrimp feed. *Aquaculture*, 2009; 296(1, 2):51-57.
 59. Kuhn DD, Lawrence AL, Boardman GD, Patnaik S, Marsh L, Flick GJ. Evaluation of two types of bioflocs derived from biological treatment of fish effluent as feed ingredients for Pacific white shrimp *Litopenaeus vannamei*. *Aquaculture*, 2010; 303(1-4):28-33.
 60. Kureshy N, Davis DA. Protein requirement for maintenance and maximum weight gain for the pacific white shrimp, *Litopenaeus vannamei*. *Aquaculture*, 2002; 204(1-2):125-143.
 61. Liu L, Hu Z, Dai X, Avnimelech Y. Effects of addition of maize starch on the yield, water quality and formation of bioflocs in an integrated shrimp culture system. *Aquaculture*. 2014; 418-419:79-86.
 62. Mallasen M, Valenti WC. Effect of nitrite on larval development of the giant river prawn, *Macrobrachium rosenbergii*. *Aquaculture*, 2006; 261(4):1292-1298.
 63. Matos J, Costa S, Rodrigues A, Pereira R, Pinto IS. Experimental integrated aquaculture of fish and red seaweeds in Northern Portugal. *Aquaculture*. 2006; 252(1):31-42.
 64. McIntosh RP. Changing paradigms in shrimp farming: IV. Low protein feeds and feeding strategies, *Global Aquaculture Advocate*. 2000a; 3(2):45-50.
 65. McIntosh RP. Changing paradigms in shrimp farming: V. Establishment of heterotrophic bacterial communities. *Global Aquaculture Advocate*. 2000b; 3(6):52-54.
 66. McIntosh D, Samocha TM, Jones ER, Lawrence AL, McKee DA, Horowitz S *et al.* The effect of a commercial bacterial supplement on the high-density culturing of *Litopenaeus vannamei* with low-protein diet in outdoor tank system and no water exchange. *Aquaculture Engineering*. 2000; 21(3):215-227.
 67. Megahed ME. The effect of microbial biofloc on water quality, survival and growth of the green tiger shrimp (*Penaeus semisulcatus*) fed with different crude protein levels. *Journal of the Arabian Aquaculture Society*. 2010; 5(2):119-141.
 68. Michaud L, Blancheton JP, Bruni V, Piedrahita R. Effect of particulate organic carbon on heterotrophic bacterial populations and nitrification efficiency in biological filters. *Aquaculture Engineering*. 2006; 34(3):224-233.
 69. Mishra JK, Samocha TM, Patnaik S, Peed M, Gandy RL, Ali. Performance of an intensive nursery system for the Pacific white shrimp, *Litopenaeus vannamei*, under limited discharge condition. *Aquaculture Engineering*, 2008; 38(1):2-15.
 70. Moav R, Wohlfart G, Schroeder GL, Hulata G, Barash H. Intensive polyculture of fish in freshwater ponds, I. Substitution of expensive feeds by liquid cow manure, *Aquaculture*, 1977; 10(1):25-43.
 71. Moriarty DJW. The role of microorganisms in pond aquaculture. *Aquaculture*. 1997; 151(1-4):333-349.
 72. Moss SM, Pruder GD, Leber KM, Wyban JA. Relative enhancement of *Penaeus vannamei* growth by selected fractions of shrimp pond water. *Aquaculture*. 1992; 101:229-239.
 73. Moss SM, Pruder GD. Characterization of organic particles associated with rapid growth in juvenile white shrimp, *Penaeus vannamei* Boone, reared under intensive culture conditions. *Journal of Experimental Marine Biology and Ecology*. 1995; 187:1715-1791.
 74. Moss SM. Production of growth-enhancing particles in a plastic-lined shrimp pond. *Aquaculture*. 1995; 132(3, 4):253-260.
 75. Moss SM. Dietary importance of microbes and detritus in *penaeid* shrimp aquaculture, In C.S. Lee and P. O'Bryen (eds.), *Microbial approaches to aquatic nutrition within environmentally sound aquaculture production systems*, Baton Rouge, LA: World Aquaculture Society. 2002, 1-18.
 76. Ogello EO, Musa SM, Aura CH, Abwao JO, Muuguti JM. An appraisal of the feasibility of tilapia production in pond using biofloc technology. *Int. j. aqu. sci.* 2014; 5(1):21-39.
 77. Olah J, Sinha RP, Ayyappan S, Purushothaman CS, Radheysyam S. Sediment consumption in tropical undrainable fish ponds. *International Review of Hydrobiology*. 1987; 72(3):297-305.
 78. Panjaitan P. Field and laboratory study of *Penaeus monodon* culture with zero water exchange and limited water exchange model using molasses as a carbon source. Ph.D. Thesis, Charles Darwin Univ., Darwin, NT, Australia, 2004.
 79. Panjaitan P. Effect of C:N ratio levels on water quality and shrimp production parameters in *Penaeus monodon* shrimp culture with limited water exchange using molasses as a carbon source. *ILMUKELAUTAN Maret*, 2011; 16(1):1-8.
 80. Piedrahita RH. Reducing the potential environmental impact of tank aquaculture effluents through intensification and recirculation. *Aquaculture*. 2003; 226 (1-4):35-44.
 81. Ray AJ, Seaborn G, Leffler JW, Wilde SB, Lawson A, Browdy CL. Characterization of microbial communities in minimal-exchange, intensive aquaculture systems and the effects of suspended solids management. *Aquaculture*. 2010; 310(1, 2):130-138.
 82. Rostika Rita, Lili Walim. Prevention of *vibrio harveyi* infection at the fresh water shrimp (*Macrobrachium rosenbergii*) use of bioflocks aggregation. *Lucrari Stiintifice -Seria Zootehnie*. 2012; (58):251-253.
 83. Rostika R. The reduction feed on shrimp vaname (*Litopenaeus vannamei*) replaced by the addition biofloc in ciamis district. *Res. J. Bio tech*. 2014; 9(2):56-59
 84. Russo RC, Thurston RV. Toxicity of ammonia, nitrite and nitrate to fishes. In, 1991.
 85. Brune DE, Tomasso JR. (Eds.), *Aquaculture and Water Quality*. Baton Rouge: The World Aquaculture Society, 58-89,
 86. Salehizadeh H, Van Loosdrecht MCM. Production of polyhydroxyalkanoates by mixed culture: recent trends and biotechnological importance. *Biotechnol. Adv.*, 2004; 22(3):261-279.
 87. Samocha TM, Patnaik S, Speed M, Ali AM, Burger JM, Almeida RV *et al.* Use of molasses as carbon source in limited discharge nursery and grow-out systems for *Litopenaeus vannamei*. *Aquaculture Engineering*. 2007; 36:184-191.
 88. Schneider O, Sereti V, Eding EH, Verreth JAJ. Analysis of nutrient flows in integrated intensive aquaculture systems. *Aquaculture Engineering*. 2005; 32(3, 4):379-401.
 89. Schroeder GL. Autotrophic and heterotrophic production

- of microorganisms in intensively manure fish ponds, and related fish yields. *Aquaculture*. 1978; 14(4):303-325.
90. Subasinghe RP. Epidemiological approach to aquatic animal health management: opportunities and challenges for developing countries to increase aquatic production through aquaculture. *Preventive Veterinary Medicine*, 2005; 67(2, 3):117-124.
91. Sun, Yao, Zhang, Shufang, Chen, Jufa *et al.* Supplement and consumption of dissolved oxygen and their seasonal variations in shrimp pond. *Mar. Sci. Bull.* 2001; 3:89-96.
92. Suresh AV, Lin CK. Effect of stocking density on water quality and production of red tilapia in a recirculated water system. *Aquaculture Engineering*. 1992; 11:1-22.
93. Taw N. Biofloc technology expanding at white shrimp farms: Biofloc systems deliver high productivity with sustainability. *Global Aquaculture Advocate*. 2010; 13(3):24-30.
94. Thompson FL, Abrea PC, Wasielesky W. Importance of biofilm for water quality and nourishment in intensive shrimp culture. *Aquaculture*. 2002; 203:263-278.
95. Tacon AGJ, Cody JJ, Conquest LD, Divakaran S, Forster IP, Decamp OE. Effect of culture system on the nutrition and growth performance of Pacific white shrimp *Litopenaeus vannamei* (Boone) fed different diets. *Aquaculture Nutrition*. 2002; 8(2):121-137.
96. Trainer MA, Charles TC. The role of PHB metabolism in the symbiosis of Rhizobia with legumes. *Appl. Microbiol. Biotechnol*, 2006; 71(4):377-386.
97. Tucker CS, Robinson EH. *Channel catfish farming Handbook*, New York: Van nostrand Reinhold, 1990, 454.
98. Twarowska JG, Westerman PW, Losordo TM. Water treatment and waste characterization evaluation of an intensive recirculating fish production system. *Aquaculture Engineering*. 1997; 16(3):133-147.
99. Valenti WC, Daniels WH. Recirculation hatchery systems and management. In: New, M.B., Valenti, W.C. (Eds), *Freshwater Prawn Culture*, Oxford: Blackwell. 2000, 69-90.
100. Velasco M, Lawrence AL, Neill WH. Development of a static-water ecoassay with microcosm tanks for post larval *Penaeus vannamei*. *Aquaculture*. 1998; 161(1-4):79-87.
101. Venero JA, Davis DA, Rouse DB. Variable feed allowance with constant protein input for the Pacific white shrimp *Litopenaeus vannamei* reared under semi-intensive conditions in tanks and ponds. *Aquaculture*, 2007; 269(1-4):490-503.
102. Venero JA, Davis DA, Rouse DB. Effect of the dietary ratio of digestible energy to crude protein on growth and feed conversion in juvenile Pacific white shrimp *Litopenaeus vannamei* under similar levels of daily protein consumption. *North American Journal of Aquaculture*. 2008; 70:43-49.
103. Visscher PT, Duerr EO, Water quality and microbial dynamics in shrimp ponds receiving bagasse-based. *Journal of the World Aquaculture Society*. 1991; 22:65-76.
104. Wasielesky W, Atwood HL, Stokes A, Browdy CL. Effect of natural production in a zero exchange suspended microbial floc based super-intensive culture system for white shrimp *Litopenaeus vannamei*. *Aquaculture*. 2006; 258:396-403.
105. Weirich CR, Browdy CL, Bratvold D, McAbee BJ, Stokes AD. Preliminary characterization of a prototype minimal exchange super-intensive shrimp production system. In *Proceedings of the IVth international conference on recirculating aquaculture*, Blacksburg, USA: Virginia Tech University. 2002, 255-270.
106. Yu J, Plackett D, Chen LXL. Kinetics and mechanism of the monomeric products from abiotic hydrolysis of poly [(R) -3hydroxybutyrate] under acidic and alkaline conditions. *Polymer Degradation and Stability*. 2005; 89:289-299.